

INTRODUCTION

Background

Graceville Memorial Park (D300) is a historic sports and general recreation park situated between the Brisbane-Ipswich Railway Line and Oxley Road in the suburb of Graceville. The park is included in both the Brisbane Heritage Register and the Queensland Heritage Register (QHR 602443). A large part of the park's heritage significance is attributed to the historic avenues of trees. These avenues are the subject of this tree management plan.

Objective

Over time trees within Graceville Memorial Park have died, trees have been replaced, not necessarily in the correct location or using the correct species. In addition, a number of weed species have self seeded obscuring historic avenues. The purpose of this tree management plan is to help guide Council in the restoration of the significant avenues in Graceville Memorial Park to help conserve the heritage values of the park for future generations.

Methodology

This tree management plan has been prepared in accordance with the principles of the ICOMOS Burra Charter. It has involved an analysis of all of the reference documents listed below and a thorough site investigation. It has entailed identifying trees that contribute to the value of historic avenues, trees that detract from the significance of historic avenues and trees that while may contribute to the avenues are in a state of decline. Recommendations on tree removals, tree replacements and new tree plantings were based on these findings.

References

- The Tree Doctor, 2019, Tree Survey & Health Assessment City Design, Graceville Memorial Park - Consultation Ideas Plan, 2004.
- A cadastral survey prepared for the above project provides tree planting locations in 2004.
- Queensland Heritage Register (QHR 602443) citation.
- 2002, Graceville Memorial Park, Graceville, Conservation Management Study Site Report.
- Catherine Brouwer Landscape Architect, 1996, Graceville Memorial Park Conservation Study.
- 1961 (24.1.61), BCC, Department of Parks, Existing Layout.
- 1963 (30.5.63), BCC Department of Parks (Harry Oakman) Proposed Improvements, Graceville Memorial Park.
- Newspaper article: Brisbane Courier, 15th September 1904.
- QImagery aerials - 1936, 1946, 1951, 1955, 1959, 1960, 1964, 1969, 1970, 1974, 1975, 1980, 1981, 1992, 1999.

History

A detailed history of Graceville Memorial Park is outlined in the above reference documents, particularly the Queensland Heritage Register (QHR 602443) citation. In terms of the history of tree planting in the park a couple of stages are of note.

Firstly, one of the first improvements carried out by the Graceville Recreation Reserve Committee when the Graceville Recreation Reserve was first gazetted in 1904 was the planting of shade trees all around the reserve.

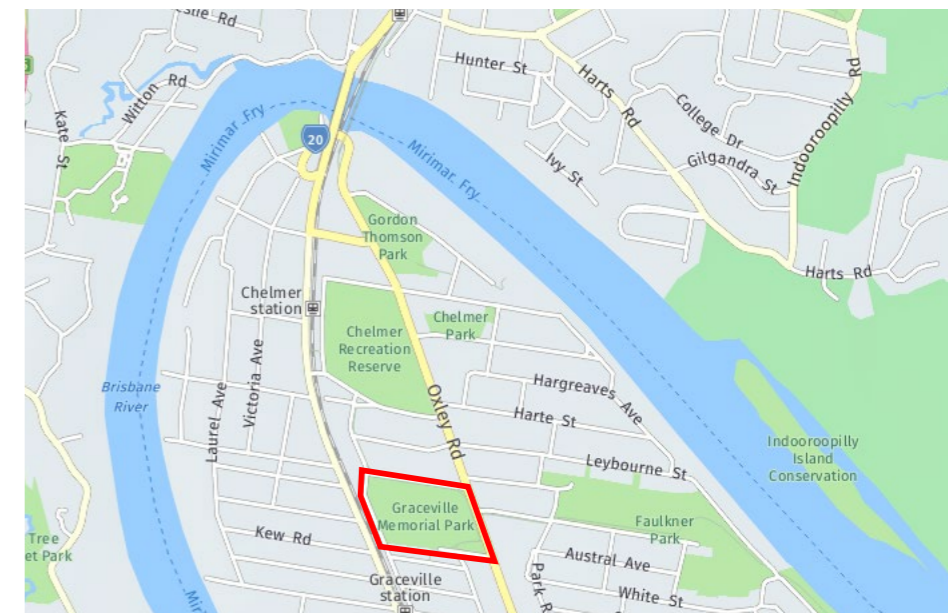
Secondly, the Sherwood Shire War Memorial was erected in the park after the First World War in 1920 and at the same time 52 memorial trees were planted in memory of fallen soldiers - 51 soldiers and one nursing sister listed in Sherwood Shire's fallen. It is unclear which tree plantings these were. The 1936 aerial shows an avenue of Cabbage Palms planted either side of a drive from Oxley Road to the memorial and a line of trees along the Oxley Road frontage. By 1946 the addition of Bunya pines set in a single row along Plumridge Street and Appel Street (then called Graceville Parade) is apparent along with a single line of figs and camphor laurels continuing west from the memorial towards Appel Street.

The Bunya pines were later interspersed with Cotton Trees and the Memorial Avenue was later interspersed with Bauhinias. Two Chinese Elms near the avenue are thought to have self seeded.



Memorial Avenue (July 2020)

Location Plan



Location Plan. Not to scale.

Sheet list

- Sheet 1 - Introduction
- Sheet 2 - Heritage Significance
- Sheet 3 - Existing Trees - Tree Survey Legend
- Sheet 4 - Existing Trees - Tree Survey Plan
- Sheet 5 - Existing Trees - Tree Survey Table
- Sheet 6 - Proposed tree removals and replacements plan
- Sheet 7 - Proposed tree removals and replacements schedule
- Sheet 8 - Tree Planting Plan
- Sheet 9 - Tree Planting List

HERITAGE SIGNIFICANCE

Historic aerial photos



1936 Aerial photo



1946 Aerial photo

Statement of significance

The following statement of heritage significance for Graceville Memorial Park was taken from the Queensland Heritage Register.

Criterion A

The place is important in demonstrating the evolution or pattern of Queensland's history.

Surviving as a highly visible remnant of the development of the Graceville district, the use of the park for team sports from the 1890s to the present demonstrates the interest in health-promoting recreation that occurred in Queensland from the late 1880s onwards. Reflecting the proliferation of recreational sport clubs that occurred during post-war suburban development, a croquet club was established in the park in 1919, and cricket and tennis facilities were operational by 1924. The Brisbane City Council's expenditure on a cricket grandstand during the Depression demonstrates the continued importance of sport to Queenslanders during the 1930s. The decade after the First World War witnessed demonstrations of grief for those who had died. Graceville Memorial Park's War Memorial, with its linked memorial avenue, and rows of memorial bunya and cottonwood trees along Appel and Plumridge Streets, demonstrates the process of grieving that was occurring across Australia in 1920 and is symbolic of both civic mourning and national pride.

Criterion B

The place demonstrates rare, uncommon or endangered aspects of Queensland's cultural heritage.

Graceville Memorial Park has features that are now uncommon within a suburban park, such as the handsome and substantial Interwar grandstand and the extensive formal plantings of memorial bunya trees.

Criterion D

The place is important in demonstrating the principal characteristics of a particular class of cultural places.

Graceville Memorial Park is important in demonstrating the principal characteristics of its class, having open recreational space, sports facilities, clubhouses and a grandstand within a park whose focal point is a War Memorial and which is bordered by memorial plantings.

Criterion E

The place is important because of its aesthetic significance.

As a large open space with fine mature trees, the park has landmark value. The memorial avenue of trees delineates the ceremonial approach to the War Memorial and effectively marks the park's southern border. The cottonwood and bunya arrangement is also striking in its contrast of alternating size and shape. A well-designed and substantial cricket grandstand enhances the aesthetic values of the park and is a fine example of the work of the Brisbane City Architect's Office in the 1930s.

Criterion G

The place has a strong or special association with a particular community or cultural group for social, cultural or spiritual reasons.

The war memorial in the park has a strong and continuing association with the wider community as evidence of the impact of a major historic event and as the focal point for the remembrance of that event.

The park is also important to the local area as a venue for sport and recreation for several generations, having a long-standing association with the Graceville Croquet Club and Western Suburbs District Cricket Club.



View towards historic grandstand (June 2020)



View of former playground with Memorial Avenue in the background (1964) BCC-B54-21980

EXISTING TREES - TREE SURVEY LEGEND

This sheet is to be read in conjunction with Sheet 4 - Existing Trees - Tree Survey Plan and Sheet 5 Existing Trees - Tree Survey Table. The tree survey is based on the 2019 Tree Survey - Graceville Memorial Park prepared by The Tree Doctor for Council.

Legend

112 Existing trees with identification number correlating to the Tree Doctors Tree Survey - Graceville Memorial Park.

	SPECIES	COMMON
Ara	Araucaria bidwilli	Bunya Pine
Bau	Bauhinia x blakeana	Hong Kong Orchid tree
Cel	Celtis sinensis	Chinese Elm
Cin	Cinnamomum camphora	Camphor Laurel
Cup	Cupaniopsis anacardodes	Tuckeroo
Euc	Eucalyptus tereticornus	Forest Red Gum
Fic	Ficus hillii	Hill's Weeping Fig
	Ficus macrophylla	Moreton Bay Fig
	Ficus obliqua	Small Leaf Fig
	Ficus virens	White Fig
Fii	Flindersia australis	Crow's Ash
Hib	Hibiscus tiliaceus	Cottonwood
Jac	Jacaranda mimosifolia	Jacaranda
Koe	Koelreuteria paniculata	Golden Rain Tree
Liv	Livistona australis	Cabbage Palm
	Livistona nitida	Western Cabbage Palm
	Livistona decipiens	Weeping Cabbage Palm
Lop	Lophostemon confertus	Brush Box
Mac	Macadamia integrifolia	Macadamia Nut
Mel	Melaleuca leucadendra	Weeping Paperbark
	Melaleuca saligna	Paperbark
Sch	Schotia brachypetala	Parot Tree

Historic avenues

AVENUE 1 - Oxley Road

The line of trees fronting Oxley Road, along with the Memorial Avenue, were the first trees planted in Graceville Memorial Park, as illustrated by the 1936 aerial photo. The line of trees appears to be alternating fig and palm trees (with a couple of more recently planted exceptions). This is a combination that was also used along the road frontage at Toowong Memorial Park, a park that was established around the same time and also includes a memorial avenue of palms. This line of trees contributes to the heritage significance of Graceville Memorial Park. It is recommended that Council work towards reinstating the pattern of palm and fig trees by removing a couple of trees and filling in gaps.

AVENUE 2 - World War 1 Memorial Avenue

This avenue of trees consists of a double row of Cabbage Palms interspersed with Bauhinias. The Cabbage Palms were amongst the first trees planted in the park and were planted around 1920 when the War Memorial was also built. They are highly significant. The Bauhinias were a later addition possibly planted in the late 1970s.

AVENUE 3 - Southern boundary figs

This line of trees consists of alternating Fig and Camphor laurel trees. The tree closest to the War Memorial (a Camphor Laurel) appears to have been planted before 1936. The other trees were planted a few years later prior to 1946.

AVENUE 4 - Plumridge and Appel Streets

Consists of a row of Bunya Pines interspersed with Cottonwood trees and includes three mature Eucalypts on an alignment closer to Plumridge Street. It appears that the Bunya Pines were planted between 1936 and 1946. The Cottonwoods may have been planted around the late 1950s. The Eucalypt trees were not part of the original layout but may have been planted around the early 1970s.



Plumridge Avenue (July 2020)

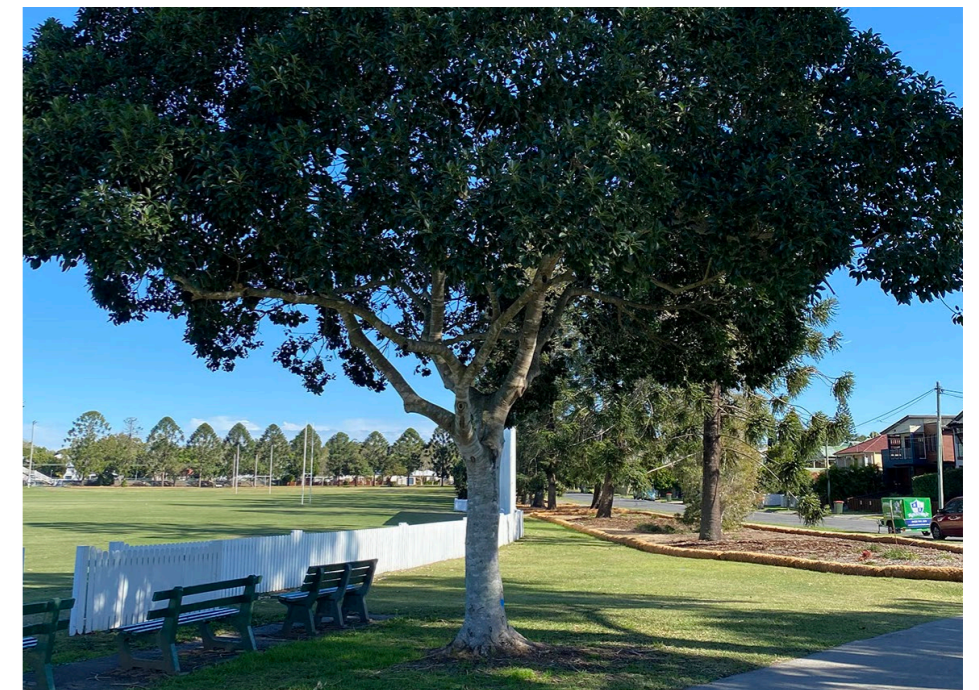
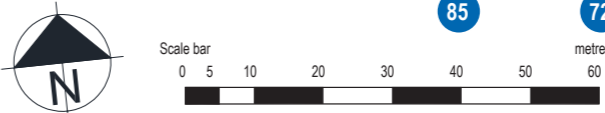
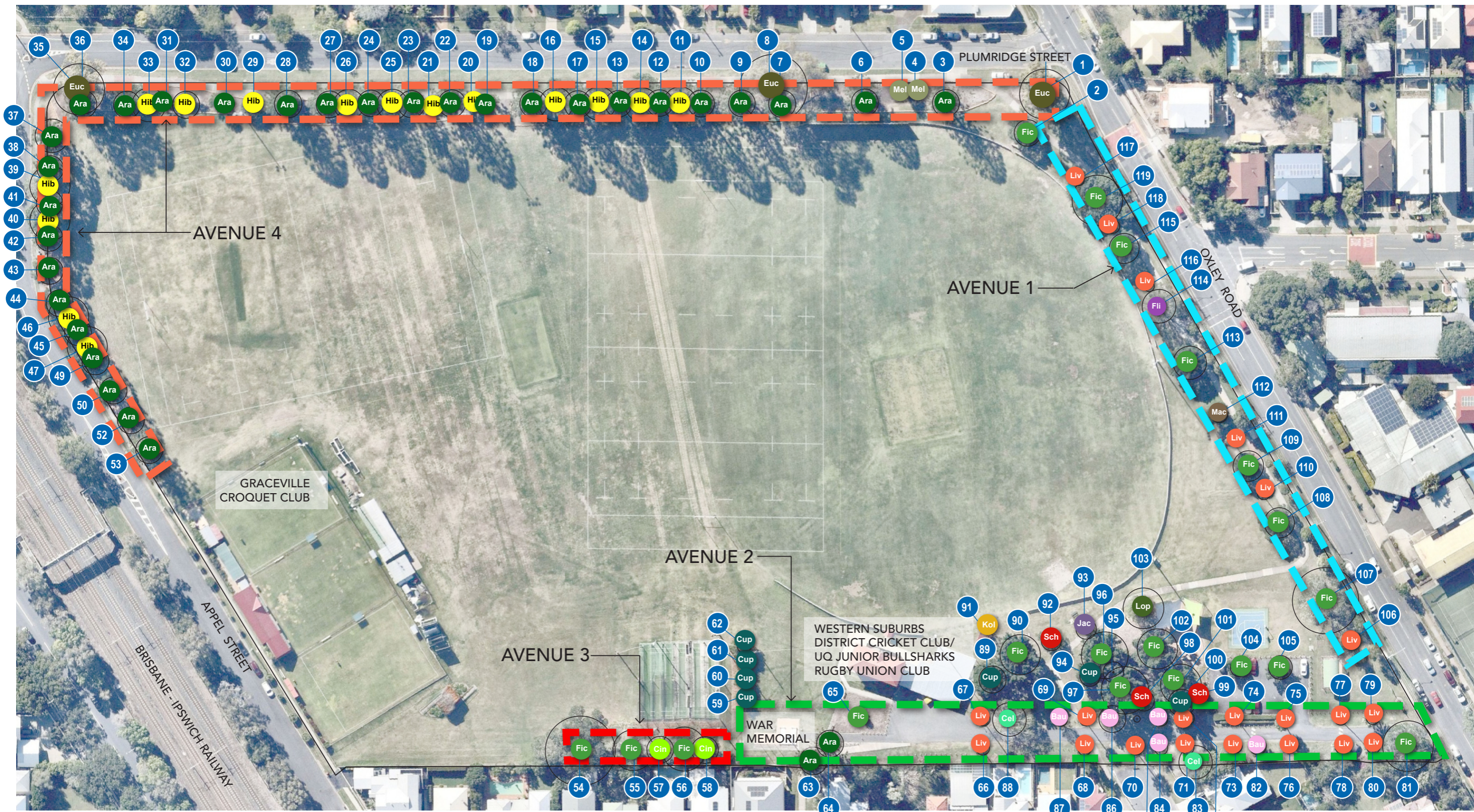


Fig tree on the corner of Oxley Road and Plumridge St (July 2020)

EXISTING TREES - TREE SURVEY PLAN



Graceville Memorial Park - Tree Management Plan

September 2020
 Sheet 4 of 9
 Issue 2



FOR DISCUSSION PURPOSES ONLY

Dedicated to a better Brisbane

EXISTING TREES - TREE SURVEY TABLE

TREE SURVEY		
ID	SPECIES	COMMON
1	<i>Eucalyptus tereticornus</i>	Forest Red Gum
2	<i>Ficus obliqua</i>	Small Leaf Fig
3	<i>Araucaria bidwilli</i>	Bunya Pine
4	<i>Melaleuca leucadendra</i>	Paperbark
5	<i>Melaleuca leucadendra</i>	Weeping Paperbark
6	<i>Araucaria bidwilli</i>	Bunya Pine
7	<i>Araucaria bidwilli</i>	Bunya Pine
8	<i>Eucalyptus tereticornus</i>	Forest Red Gum
9	<i>Araucaria bidwilli</i>	Bunya Pine
10	<i>Araucaria bidwilli</i>	Bunya Pine
11	<i>Hibiscus tiliaceus</i>	Cottonwood
12	<i>Araucaria bidwilli</i>	Bunya Pine
13	<i>Araucaria bidwilli</i>	Bunya Pine
14	<i>Hibiscus tiliaceus</i>	Cottonwood
15	<i>Hibiscus tiliaceus</i>	Cottonwood
16	<i>Hibiscus tiliaceus</i>	Cottonwood
17	<i>Araucaria bidwilli</i>	Bunya Pine
18	<i>Araucaria bidwilli</i>	Bunya Pine
19	<i>Araucaria bidwilli</i>	Bunya Pine
20	<i>Hibiscus tiliaceus</i>	Cottonwood
21	<i>Hibiscus tiliaceus</i>	Cottonwood
22	<i>Araucaria bidwilli</i>	Bunya Pine
23	<i>Araucaria bidwilli</i>	Bunya Pine
24	<i>Araucaria bidwilli</i>	Bunya Pine
25	<i>Hibiscus tiliaceus</i>	Cottonwood
26	<i>Hibiscus tiliaceus</i>	Cottonwood
27	<i>Araucaria bidwilli</i>	Bunya Pine
28	<i>Araucaria bidwilli</i>	Bunya Pine
29	<i>Hibiscus tiliaceus</i>	Cottonwood
30	<i>Araucaria bidwilli</i>	Bunya Pine
31	<i>Araucaria bidwilli</i>	Bunya Pine

TREE SURVEY		
ID	SPECIES	COMMON
32	<i>Hibiscus tiliaceus</i>	Cottonwood
33	<i>Hibiscus tiliaceus</i>	Cottonwood
34	<i>Araucaria bidwilli</i>	Bunya Pine
35	<i>Eucalyptus tereticornus</i>	Forest Red Gum
36	<i>Araucaria bidwilli</i>	Bunya Pine
37	<i>Araucaria bidwilli</i>	Bunya Pine
38	<i>Araucaria bidwilli</i>	Bunya Pine
39	<i>Hibiscus tiliaceus</i>	Cottonwood
40	<i>Hibiscus tiliaceus</i>	Cottonwood
41	<i>Araucaria bidwilli</i>	Bunya Pine
42	<i>Araucaria bidwilli</i>	Bunya Pine
43	<i>Araucaria bidwilli</i>	Bunya Pine
44	<i>Araucaria bidwilli</i>	Bunya Pine
45	<i>Araucaria bidwilli</i>	Bunya Pine
46	<i>Hibiscus tiliaceus</i>	Cottonwood
47	<i>Hibiscus tiliaceus</i>	Cottonwood
48	no tree	
49	<i>Araucaria bidwilli</i>	Bunya Pine
50	<i>Araucaria bidwilli</i>	Bunya Pine
51	<i>Hibiscus tiliaceus</i>	Cottonwood
52	<i>Araucaria bidwilli</i>	Bunya Pine
53	<i>Araucaria bidwilli</i>	Bunya Pine
54	<i>Ficus macrophylla</i>	Moreton Bay Fig
55	<i>Ficus obliqua</i>	Small Leaf Fig
56	<i>Ficus macrophylla</i>	Moreton Bay Fig
57	<i>Cinnamomum camphora</i>	Camphor Laurel
58	<i>Cinnamomum camphora</i>	Camphor Laurel
59	<i>Cupaniopsis anacardodes</i>	Tuckeroo
60	<i>Cupaniopsis anacardodes</i>	Tuckeroo
61	<i>Cupaniopsis anacardodes</i>	Tuckeroo
62	<i>Cupaniopsis anacardodes</i>	Tuckeroo

TREE SURVEY		
ID	SPECIES	COMMON
63	<i>Araucaria bidwilli</i>	Bunya Pine
64	<i>Araucaria bidwilli</i>	Bunya Pine
65	<i>Ficus macrophylla</i>	Moreton Bay Fig
66	<i>Livistona australis</i>	Cabbage Palm
67	<i>Livistona australis</i>	Cabbage Palm
68	<i>Livistona australis</i>	Cabbage Palm
69	<i>Livistona australis</i>	Cabbage Palm
70	<i>Livistona australis</i>	Cabbage Palm
71	<i>Livistona australis</i>	Cabbage Palm
72	<i>Livistona australis</i>	Cabbage Palm
73	<i>Livistona nitida</i>	Western Cabbage Palm
74	<i>Livistona australis</i>	Cabbage Palm
75	<i>Livistona nitida</i>	Western Cabbage Palm
76	<i>Livistona australis</i>	Cabbage Palm
77	<i>Livistona australis</i>	Cabbage Palm
78	<i>Livistona nitida</i>	Western Cabbage Palm
79	<i>Livistona nitida</i>	Western Cabbage Palm
80	<i>Livistona australis</i>	Cabbage Palm
81	<i>Ficus obliqua</i>	Small Leaf Fig
82	<i>Bauhinia x blakeana</i>	Hong Kong Orchid tree
83	<i>Celtis sinensis</i>	Chinese Elm
84	<i>Bauhinia x blakeana</i>	Hong Kong Orchid tree
85	<i>Bauhinia x blakeana</i>	Hong Kong Orchid tree
86	<i>Bauhinia x blakeana</i>	Hong Kong Orchid tree
87	<i>Bauhinia x blakeana</i>	Hong Kong Orchid tree
88	<i>Celtis sinensis</i>	Chinese Elm
89	<i>Cupaniopsis anacardodes</i>	Tuckeroo
90	<i>Ficus hillii</i>	Hill's Weeping Fig
91	<i>Koelreuteria paniculata</i>	Golden Rain Tree
92	<i>Schotia brachypetala</i>	Parot Tree
93	<i>Jacaranda mimosifolia</i>	Jacaranda

TREE SURVEY		
ID	SPECIES	COMMON
94	<i>Cupaniopsis anacardodes</i>	Tuckeroo
95	<i>Cupaniopsis anacardodes</i>	Tuckeroo
96	<i>Ficus hillii</i>	Hill's Weeping Fig
97	<i>Ficus hillii</i>	Hill's Weeping Fig
98	<i>Schotia brachypetala</i>	Parot Tree
99	<i>Schotia brachypetala</i>	Parot Tree
100	<i>Cupaniopsis anacardodes</i>	Tuckeroo
101	<i>Ficus hillii</i>	Hill's Weeping Fig
102	<i>Ficus hillii</i>	Hill's Weeping Fig
103	<i>Lophostemon confertus</i>	Brush Box
104	<i>Ficus hillii</i>	Hill's Weeping Fig
105	<i>Ficus hillii</i>	Hill's Weeping Fig
106	<i>Livistona decipiens</i>	Weeping Cabbage Palm
107	<i>Ficus macrophylla</i>	Moreton Bay Fig
108	<i>Ficus obliqua</i>	Small Leaf Fig
109	<i>Ficus obliqua</i>	Small Leaf Fig
110	<i>Livistona australis</i>	Cabbage Palm
111	<i>Livistona australis</i>	Cabbage Palm
112	<i>Macadamia integrifolia</i>	Macadamia Nut
113	<i>Ficus hillii</i>	Hill's Weeping Fig
114	<i>Flindersia australis</i>	Crow's Ash
115	<i>Ficus obliqua</i>	Small Leaf Fig
116	<i>Livistona decipiens</i>	Weeping Cabbage Palm
117	<i>Livistona decipiens</i>	Weeping Cabbage Palm
118	<i>Livistona australis</i>	Cabbage Palm
119	<i>Ficus virens</i>	White Fig

PROPOSED TREE REMOVALS AND REPLACEMENTS PLAN



Legend

- 4** Trees proposed for removal. The numbered trees relate to the tree survey. The trees identified by a letter were not identified in the tree survey.
- 29** Trees proposed for relocation.
- 49** Trees to undergo further investigation by a qualified arborist to assess structural integrity (through Picus test) and determine management strategy.
- 83** As trees die replace as per the Tree Planting Plan CA20 881349 with specified species.

Note: Refer to the Tree Removal Schedule on Sheet 7

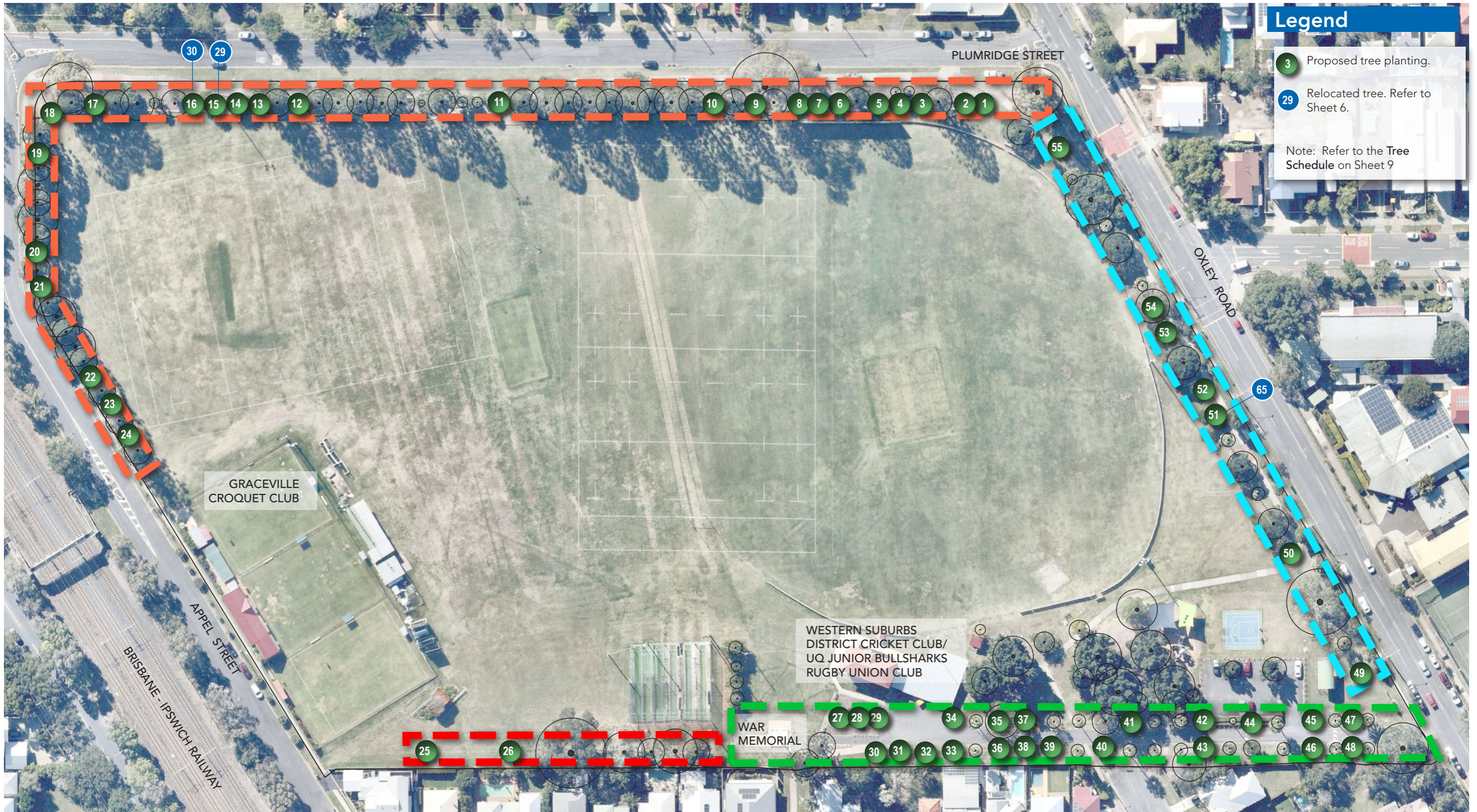


PROPOSED TREE REMOVALS AND REPLACEMENTS SCHEDULE

TREE REMOVAL SCHEDULE			
	SPECIES	COMMON	DISCUSSION
39	<i>Hibiscus tiliaceus</i>	Cottonwood	Trees to undergo further investigation by a qualified arborist to assess structural integrity (through Picus test) and determine management strategy.
46	<i>Hibiscus tiliaceus</i>	Cottonwood	
49	<i>Araucaria bidwillii</i>	Bunya pine	
52	<i>Araucaria bidwillii</i>	Bunya pine	
74	<i>Livistona australis</i>	Cabbage Palm	
112	<i>Macadamia integrifolia</i>	Macadamia nut	
114	<i>Flindersia australis</i>	Crow's Ash	
4	<i>Melaleuca saligna</i>	Paperbark	Two small trees that were not part of the original layout. Left alone they would increase in size and obscure the avenue and detract from the park's heritage significance.
5	<i>Melaleuca leucadendra</i>	Weeping paperbark	
65	Juvenile <i>Ficus macrophylla</i>	Moreton Bay Fig	This recently planted fig replaced a mature fig that failed. The fig was not part of the original layout but was planted around the early 1960s. Such a large tree in this location would obscure the Memorial Avenue. It is recommended that it be relocated to tree no.51 as shown on the Tree Planting Plan (Sheet 8) .
83	<i>Celtis sinensis</i>	Chinese Elm	Trim to facilitate replacement planting. Retain until until tree dies and replant as per the Tree Planting Plan CA20 881349 with specified species.
88	<i>Celtis sinensis</i>	Chinese Elm	
91	<i>Koelreuteria paniculata</i>	Golden Rain tree	
92	<i>Schotia brachypetala</i>	Parrot Tree	
93	<i>Jacaranda mimosifolia</i>	Jacaranda	
99	<i>Schotia brachypetala</i>	Parrot Tree	
100	<i>Cupaniopsis anacardioides</i>	Tuckeroo	

TREE REMOVAL SCHEDULE			
	SPECIES	COMMON	DISCUSSION
A	Juvenile <i>Eucalyptus</i>	Unknown	While there are some Eucalyptus trees along this edge of the park this tree is located too close to existing Bunya Pines and if left alone will have an adverse effect on the trees in time.
B	Juvenile <i>Eucalyptus</i>	Unknown	Three juvenile trees poorly located and not in keeping with the planting along this edge of the park.
C	<i>Cupaniopsis anacardioides</i>	Tuckeroo	
D	<i>Cupaniopsis anacardioides</i>	Tuckeroo	
E	Juvenile palm	Unknown	A recently planted palm in the Memorial Avenue. While the location is appropriate for a palm it does not appear to be a suitable species. Palms in the Memorial Avenue consist of Cabbage Palms.
29	<i>Hibiscus tiliaceus</i>	Cottonwood	These two trees were planted relatively recently but not in the correct location. To reflect the correct avenue layout it is recommended that they be relocated in accordance with the locations proposed in the Tree Planting Plan (Sheet 8) . Tree no. 29 to be relocated to tree no.15 on the Tree Planting Plan and Tree no. 30 to be relocated to tree no.16.
30	<i>Araucaria bidwillii</i>	Bunya pine	

TREE PLANTING PLAN



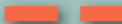

Legend

- 3 Proposed tree planting.
- 29 Relocated tree. Refer to Sheet 6.

Note: Refer to the Tree Schedule on Sheet 9



TREE PLANTING LIST

TREE SCHEDULE			
	SPECIES	COMMON	NOTES
1	<i>Araucaria bidwillii</i>	Bunya pine	<p> Avenue 4 - Plumridge and Appel Streets</p> <p>Infill tree planting to reinstate avenue. Replacement Hibiscus trees to be grown from cuttings from original existing Hibiscus trees. This is to maintain the same genetic provenance.</p>
2	<i>Hibiscus tiliaceus</i>	Cottonwood	
3	<i>Hibiscus tiliaceus</i>	Cottonwood	
4	<i>Araucaria bidwillii</i>	Bunya pine	
5	<i>Hibiscus tiliaceus</i>	Cottonwood	
6	<i>Hibiscus tiliaceus</i>	Cottonwood	
7	<i>Araucaria bidwillii</i>	Bunya pine	
8	<i>Hibiscus tiliaceus</i>	Cottonwood	
9	<i>Hibiscus tiliaceus</i>	Cottonwood	
10	<i>Hibiscus tiliaceus</i>	Cottonwood	
11	<i>Hibiscus tiliaceus</i>	Cottonwood	
12	<i>Hibiscus tiliaceus</i>	Cottonwood	
13	<i>Hibiscus tiliaceus</i>	Cottonwood	
14	<i>Araucaria bidwillii</i>	Bunya pine	
15	<i>Hibiscus tiliaceus*</i>	Cottonwood	
16	<i>Araucaria bidwillii**</i>	Bunya pine	
17	<i>Hibiscus tiliaceus</i>	Cottonwood	
18	<i>Hibiscus tiliaceus</i>	Cottonwood	
19	<i>Hibiscus tiliaceus</i>	Cottonwood	
20	<i>Hibiscus tiliaceus</i>	Cottonwood	
21	<i>Hibiscus tiliaceus</i>	Cottonwood	
22	<i>Hibiscus tiliaceus</i>	Cottonwood	
23	<i>Hibiscus tiliaceus</i>	Cottonwood	
24	<i>Hibiscus tiliaceus</i>	Cottonwood	
25	<i>Ficus macrophylla</i>	Moreton Bay fig	<p> Avenue 3 - Southern boundary figs</p> <p>Replacement trees that were originally included in this row of trees as seen on the 1946 Aerial.</p>
26	<i>Ficus obliqua</i>	Small leaf fig	

TREE SCHEDULE			
	SPECIES	COMMON	NOTES
27	<i>Livistona australis</i>	Cabbage palm	<p> Avenue 2 - World War 1 Memorial Avenue</p> <p>Infill tree planting to reinstate avenue.</p>
28	<i>Bauhinia x blakeana</i>	Hong Kong Orchid tree	
29	<i>Livistona australis</i>	Cabbage palm	
30	<i>Livistona australis</i>	Cabbage palm	
31	<i>Bauhinia x blakeana</i>	Hong Kong Orchid tree	
32	<i>Livistona australis</i>	Cabbage palm	
33	<i>Bauhinia x blakeana</i>	Hong Kong Orchid tree	
34	<i>Bauhinia x blakeana</i>	Hong Kong Orchid tree	
35	<i>Bauhinia x blakeana</i>	Hong Kong Orchid tree	
36	<i>Bauhinia x blakeana</i>	Hong Kong Orchid tree	
37	<i>Livistona australis</i>	Cabbage palm	
38	<i>Livistona australis</i>	Cabbage palm	
39	<i>Bauhinia x blakeana</i>	Hong Kong Orchid tree	
40	<i>Bauhinia x blakeana</i>	Hong Kong Orchid tree	
41	<i>Livistona australis</i>	Cabbage palm	
42	<i>Bauhinia x blakeana</i>	Hong Kong Orchid tree	
43	<i>Bauhinia x blakeana</i>	Hong Kong Orchid tree	
44	<i>Bauhinia x blakeana</i>	Hong Kong Orchid tree	
45	<i>Bauhinia x blakeana</i>	Hong Kong Orchid tree	
46	<i>Bauhinia x blakeana</i>	Hong Kong Orchid tree	
47	<i>Bauhinia x blakeana</i>	Hong Kong Orchid tree	
48	<i>Bauhinia x blakeana</i>	Hong Kong Orchid tree	
49	<i>Ficus obliqua</i>	Small leaf fig	<p> Avenue 1 - Oxley Road</p> <p>Infill tree planting to reinstate the avenue.</p>
50	<i>Livistona australis</i>	Cabbage palm	
51	<i>Ficus macrophylla***</i>	Moreton Bay fig	
52	<i>Livistona decipiens</i>	Weeping Cabbage palm	
53	<i>Livistona decipiens</i>	Weeping Cabbage palm	
54	<i>Ficus virens</i>	White fig	
55	<i>Ficus macrophylla</i>	Moreton Bay fig	

* Transplanted tree no.29
 ** Transplanted tree no.30
 *** Transplanted tree no.65